



THE SHALFORD

2 bedroom terraced house
Plots 22, 23, 24 & 25





KNIGHTS GREEN

LOXWOOD | WEST SUSSEX

 ANTLER HOMES

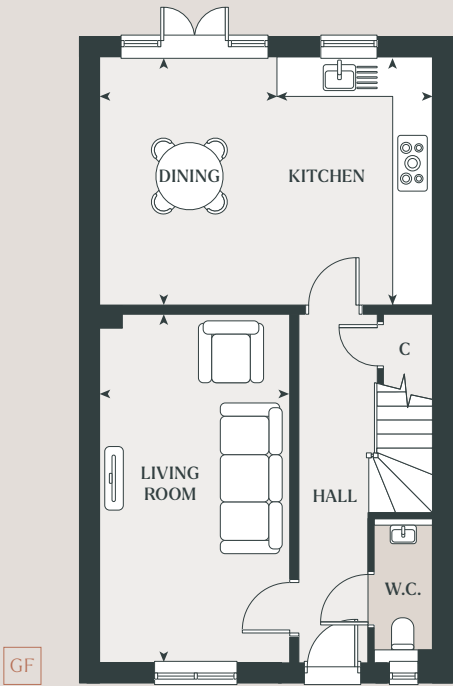
antlerhomes.co.uk

The Shalford is a versatile home with impressively spacious interiors, like the large living room, a kitchen/dining room that stretches the width of the home and a first floor study which could be used as a third bedroom.

| | | | | | |
|---|---|---|---|---|---|
|  |  |  |  |  |  |
| BEDROOMS 2 | BATHROOMS 2 | SPACES 2 | AREA 1,177 SQFT | AREA 109.36 SQM | EPC (PREDICTED) A/B* |

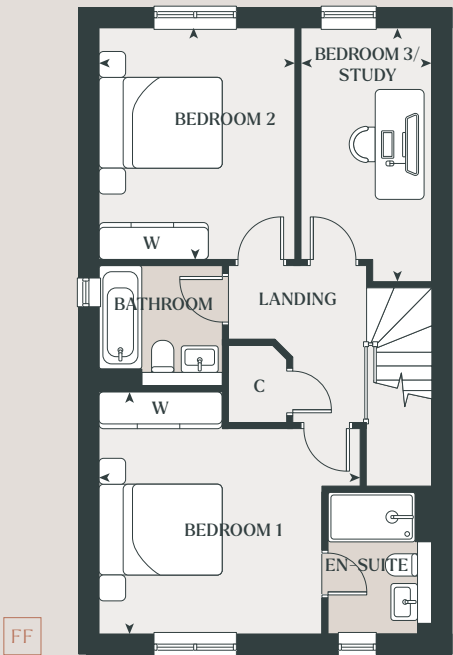
Ground Floor

| |
|--------------------------------|
| Kitchen |
| 4.09m x 2.54m 13'5" x 8'3" |
| Dining |
| 4.09m x 2.91m 13'5" x 9'5" |
| Living Room |
| 5.69m x 3.11m 18'8" x 10'2" |



First Floor

| |
|---------------------------------|
| Bedroom 1 |
| 4.34m x 3.65m 14'3" x 11'10" |
| Bedroom 2 |
| 3.74m x 3.20m 12'2" x 10'5" |
| Bedroom 3/Study |
| 4.11m x 2.12m 13'5" x 7'0" |



C – Cupboard W – Wardrobe

*Plots 23 & 24 predicted EPC A and plots 22 & 25 predicted EPC B. Plots 22 & 24 are handed. Details may vary from plot to plot. Dimensions are approximate and should not be used for furniture space, appliance space or carpet sizes. Please ask for details of your chosen plot. The contents of this document do not form or constitute a warranty or represent part of any contract. Please note: to increase legibility these plans have been sized to fit the page. As a result each plan may be a different scale to others within this document. CGIs are for indicative purposes only and can be subject to change.