



THE SUNNINGDALE

3 bedroom semi-detached house
Plots 10, 11, 14, 15, 20, 21, 26 & 27

KNIGHTS GREEN

LOXWOOD | WEST SUSSEX

 ANTLER HOMES

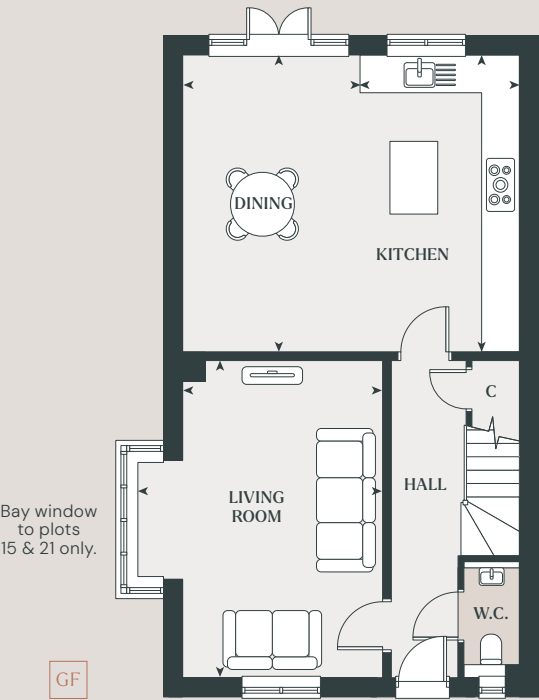
antlerhomes.co.uk

The Sunningdale is a well-appointed family home with Indian sandstone paths and patios and well-proportioned living spaces, including a light-filled living room and kitchen/dining room that opens out to the garden through a set of French doors.

					
BEDROOMS	BATHROOMS	SPACES	AREA	AREA	EPC (PREDICTED)
3	2	2	1,235 SQFT*	114.76 SQM*	A

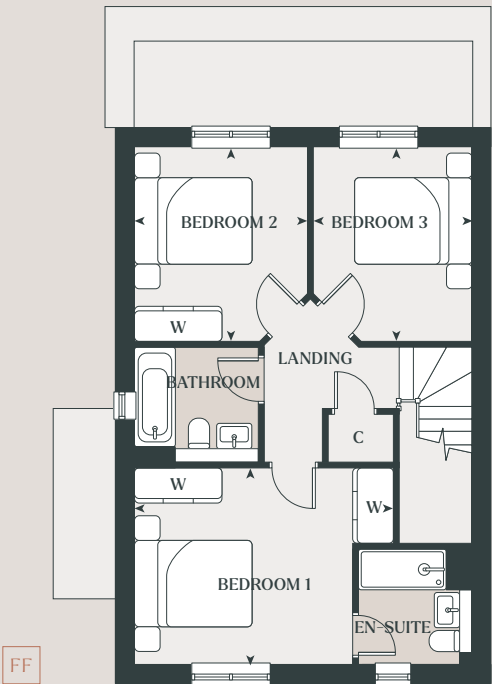
Ground Floor

Kitchen
5.10m x 2.74m 16'7" x 8'10"
Dining
3.04m x 5.10m 10'0" x 16'7"
Living Room exc bay
5.45m x 3.44m 17'11" x 11'4"
Living Room inc bay
5.45m x 4.24m 17'11" x 13'11"



First Floor

Bedroom 1
4.43m x 3.36m 14'5" x 11'0"
Bedroom 2
3.33m x 2.96m 10'9" x 9'9"
Bedroom 3
3.33m x 2.72m 10'9" x 8'11"



C – Cupboard W – Wardrobe

Plots 10, 14 & 26 are handed. *Area 116.41 sq m, 1,253 sq ft to plots 15 & 21 only. Details may vary from plot to plot. Dimensions are approximate and should not be used for furniture space, appliance space or carpet sizes. Please ask for details of your chosen plot. The contents of this document do not form or constitute a warranty or represent part of any contract. Please note: to increase legibility these plans have been sized to fit the page. As a result each plan may be a different scale to others within this document. CGIs are for indicative purposes only and can be subject to change