



# THE WINDSOR

4 bedroom detached house  
Plots 16, 17 & 18

KNIGHTS GREEN

LOXWOOD | WEST SUSSEX

 ANTLER HOMES

[antlerhomes.co.uk](http://antlerhomes.co.uk)

The handsome Windsor is a supremely spacious four bedroom home with an integrated garage and generous interiors, from the kitchen/dining/family area that stretches the width of the home to the light-filled living room with bay window.

					
BEDROOMS 4	BATHROOMS 3	SPACES 2	AREA 1,570 SQFT	AREA 145.92 SQM	EPC (PREDICTED) B

## Ground Floor

Kitchen/Dining

5.58m x 4.80m 18'3" x 15'7"

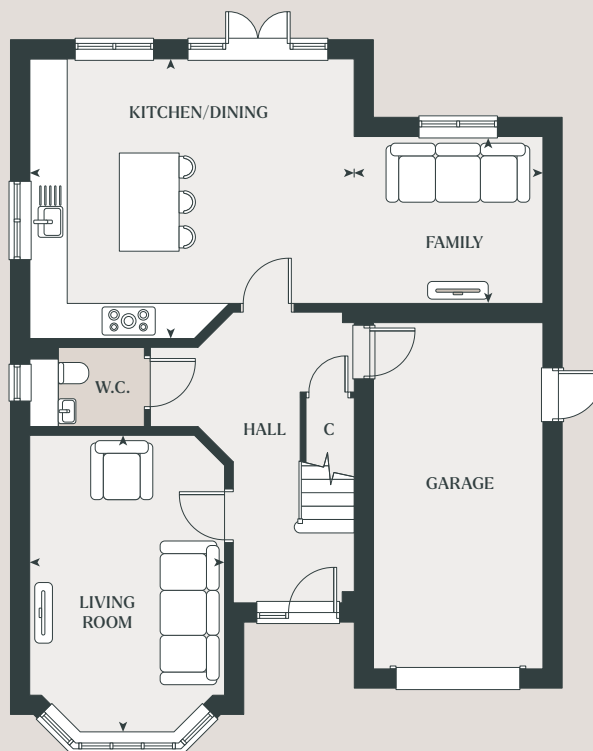
Family

3.25m x 2.86m 10'8" x 9'4"

Living Room

5.16m x 3.36m 16'9" x 11'0"

GF



## First Floor

Bedroom 1

3.13m x 4.77m 10'3" x 15'8"

Bedroom 2

3.36m x 4.61m 11'0" x 15'1"

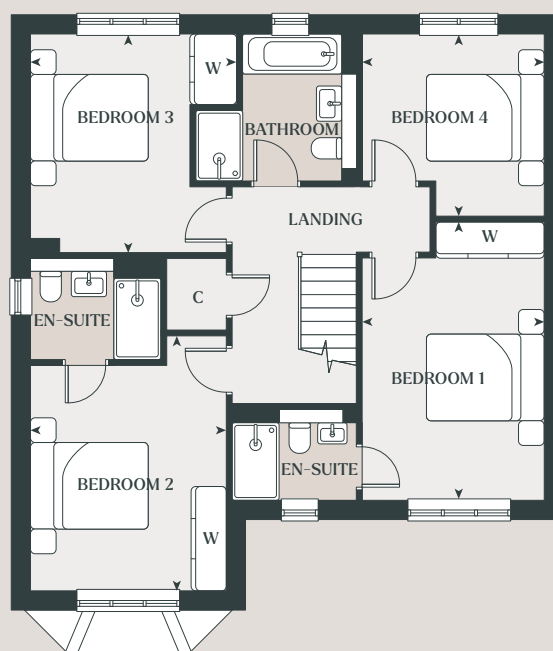
Bedroom 3

3.53m x 3.74m 11'6" x 12'2"

Bedroom 4

3.13m x 3.13m 10'3" x 10'3"

FF



C – Cupboard W – Wardrobe

Details may vary from plot to plot. Dimensions are approximate and should not be used for furniture space, appliance space or carpet sizes. Please ask for details of your chosen plot. The contents of this document do not form or constitute a warranty or represent part of any contract. Please note: to increase legibility these plans have been sized to fit the page. As a result each plan may be a different scale to others within this document. CGIs are for indicative purposes only and can be subject to change.