

Ground Floor

Kitchen

4.05m x 3.15m 13'3" x 10'4"

Dining/Family Area

6.39m x 3.11m 20'11" x 10'2"

Living Room

4.47m x 3.80m 14'7" x 12'5"

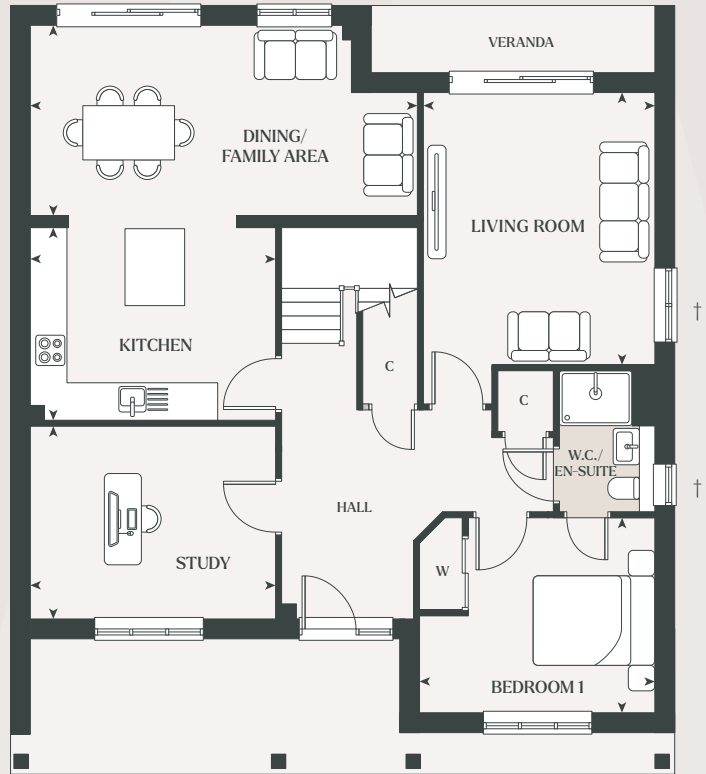
Study

4.05m x 3.15m 13'3" x 10'4"

Bedroom 1

3.83m x 3.20m 12'6" x 10'5"

GF



First Floor

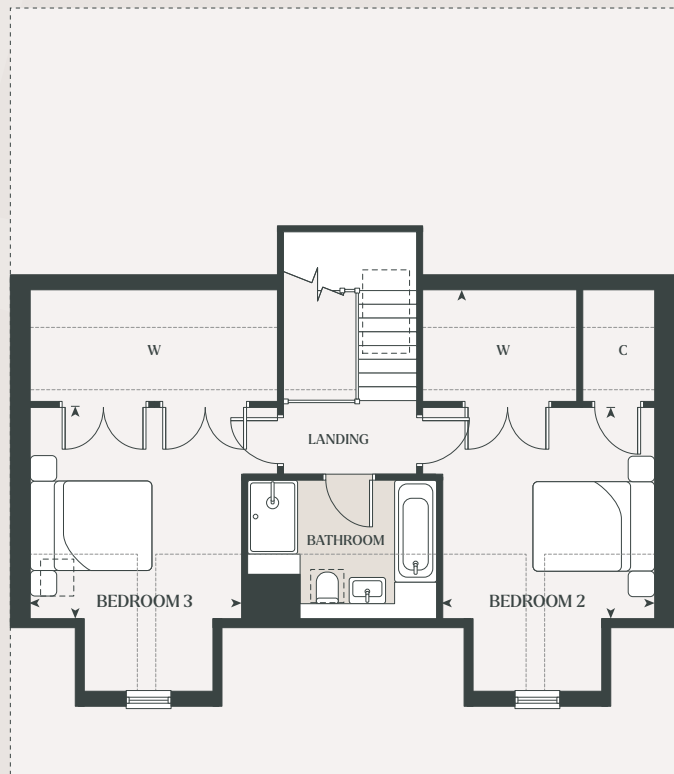
Bedroom 2

3.53m x 3.49m* 11'6" x 11'5"

Bedroom 3

3.49m* x 3.48m 11'5" x 11'5"

FF



C – Cupboard W – Wardrobe ☐ – Velux

†Windows to plot 12 only.

*Dimension taken to minimum 1.5m headroom.

Plots 10 & 12 as shown, plot 11 handed.