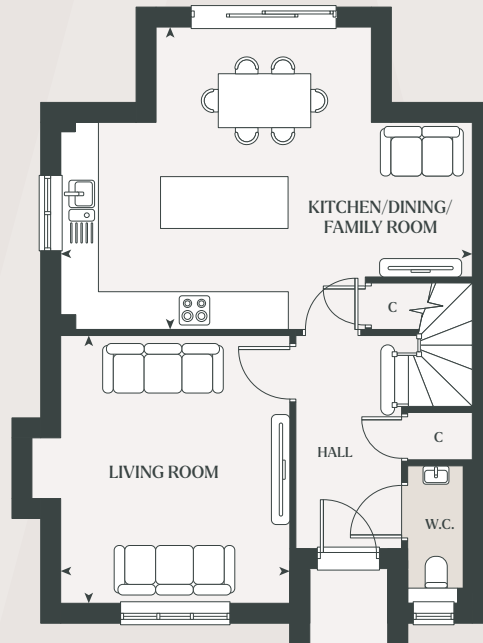


## Ground Floor

Kitchen/Dining/Family Room  
6.76m x 4.95m 22'2" x 16'2"

Living Room  
4.37m x 3.70m 14'4" x 12'1"

GF



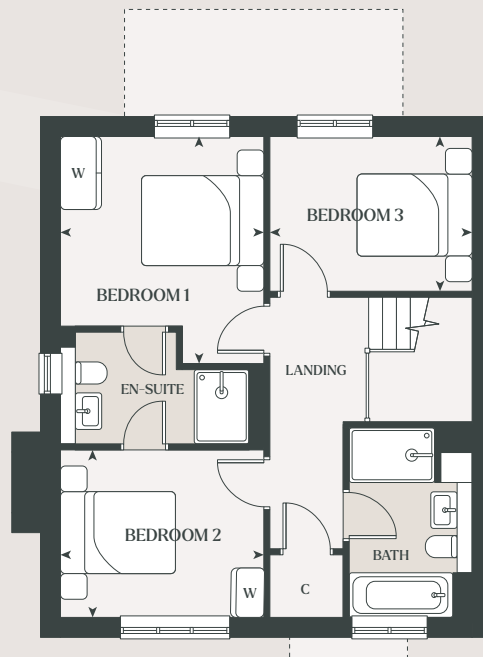
## First Floor

Bedroom 1  
3.72m x 3.30m 12'2" x 10'9"

Bedroom 2  
3.30m x 2.72m 10'9" x 8'11"

Bedroom 3  
3.31m x 2.52m 10'10" x 8'3"

FF



C – Cupboard W – Wardrobe

Plot 3 as shown, plot 2 handed.